

Cleft lip, alveolus and palate in African natives: An update on demographics and management outcome

OB Akintububo¹, EO Ojo², DD Kokong³, SA Adamu⁴, UU Nnadozie⁵,
Z Yunusa-Kaltungo⁵, I Jalo⁶ and AM Dauda⁷

Oral and Maxillofacial Dept.¹, General Surgery Unit of Surgery Dept.², ENT Dept³ Anaesthesia Dept.⁴,
Plastic Surgery Unit of Surgery Dept.⁵, Paediatrics Dept.⁶ Pathology Dept⁷
Federal Medical Centre, Gombe, Nigeria.

Abstract

Background: Development of craniofacial structures is a complex process and disruption of any of the numerous steps can lead to development of oro-facial clefts. This is a surgically amenable anomaly as from early life that has had conflicting pattern of demographics reported by various researchers globally. There are several factors that are critical to the surgical outcome.

Objective: Study the demographics and the management outcome of cleft lip, alveolus and palate and highlight factors responsible for improved care in recent time.

Design: Descriptive cohort study.

Setting: Tertiary health institution

Method: All consecutive patients managed for cleft lip, alveolus and palate (CLAP) over 7years and 10months were studied.

Outcome: Cleft lip, alveolus and palate repair was performed on 149 patients, January 1, 2001-December 31, 2008 with an incidence of 2.1/1000 live births. From this, 27 patients, averaging 4.5 patients per year were operated for the first 61/3 years while the remaining 122(81.9%) the next 11/2 years, averaging 81.6 patients yearly. Their ages ranged from 3 months - 60 years with 77 (51.7%) males and 72 (48.3.0%) females. Cleft lip was the main presentation in 108(72.5%) of which 72(66.7%) were left sided. Bilateral cleft lip were 14 (9.4%). Five (3.4%) patients had associated anomalies out of which 3(60.0%) had CLAP while 2(40.0%) isolated cleft lip or palate. The technique for cleft lip repair was Millard's and Noordhoof's while palatal cleft was the two-flap palatoplasty with intravelar veloplasty. Success was recorded in 142(95.3%) with complication observed in 7(4.7%) patients.

Conclusion: The rarity of cleft lip, alveolus and/or palate in the African native documented previously may no longer be tenable as observed

in this study. Management outcome has improved owing to the collaboration with SmileTrain, USA, along with multidisciplinary approach.

Keywords: Cleft lip, Alveolus and Palate, Demographics, African Native, Management Outcome Factors.

Résumé

Contexte: Le développement des structures cranio-faciales est un procès complexe et la perturbation de l'une des nombreuses étapes peuvent conduire au développement de fissures oro-faciales. Ceci est une anomalie responsable chirurgicalement dès le début de la vie qui a eu une structure conflictuelle de la démographie rapportés par divers chercheurs globalement. Il y a plusieurs facteurs qui sont essentiels à l'issue chirurgicale.

Objectif: Etudier les données démographiques et le résultat de la gestion de la fente labiale, alvéole et palais et mettre en évidence les facteurs responsables de l'amélioration des soins dans les temps récents.

Conception: Etude de cohorte descriptive.

Cadre: Etablissement de santé tertiaire

Méthode: Tous les patients consécutifs gérés pour une fente labiale, alvéole et palais (CLAP) durant sept ans et 10 mois ont été étudiés.

Résultat: Le raccommodage de la fente labiale, alvéole et palais a été effectué sur 149 patients, du 1er Janvier, 2001 au 31 Décembre 2008, avec une incidence de 2,1 / 1000 naissances vivantes. De ce nombre, 27 patients, avec une moyenne de 4,5 patients par an ont été opérés pendant les 61/3 premières années tandis que les 122 (81,9%) les prochaines 11/2 années, avec une moyenne de 81,6 patients par an. Leur âge variait de 3 mois - 60 ans avec 77 (51,7%) males et 72 (48.3.0%) femelles. Fente labiale était la présentation principale dans 108 (72,5%) dont 72 (66,7%) ont été du côté gauche. Les fentes labiales bilatérales étaient 14 (9,4%). Cinq (3,4%) patients avaient anomalies associées desquelles 3 (60,0%) avait CLAP tandis que 2 (40,0%) avaient la fente

labiale ou le palais isolé. La technique de rattachement pour la fente labiale était celle de Millard et de Noordhoof tandis que celle de la fente du palais était la palato-plastie à deux rabats avec vélo-plastie intra-vélar. Le succès a été remarqué dans 142 (95,3%) avec complication observée dans 7 (4,7%) patients.

Conclusion: La rareté de fente labiale, alvéole et/ou du palais dans les natives africains documentée précédemment peut ne plus être tenable comme observé dans cette étude. Le résultat de gestion a amélioré grâce à la collaboration avec SmileTrain, USA, avec une approche multidisciplinaire.

Mots clés: fente labiale, Alvéole et palais, Démographie, native africain, facteurs de résultat de gestion.

Introduction

Cleft lip (cheiloschisis) and/ or palate (palatoschisis) is the disruption of the oro- facial architecture that is an easily recognizable defect at birth. This can occur in isolation or as part of a broad range of chromosomal, Mendelian or teratogenic syndromes. Cleft lip and/ or palate is etiologically heterogenous and this has critical implications for understanding the biology of facial development, how environmental risks interact with genetic factors and how we can incorporate known etiologic variables to improve clinical care. Research on the etiology of CLAP has over the years yielded exciting discoveries around the globe that necessitated its inclusion as part of the GENEVA(Gene, Environment, Association) cleft consortium studies which is a component of the Genome-Wide Association Study(GWAS) as a fall out of the USA-led program-Gene, Environment, health Initiative(GEI) conceived in 2006 by the National Institute of Health(NIH). The GENEVA cleft consortium study confirmed IRF6(interferon regulatory factor 6), chr8q24 , 10q25 with two new loci MAFB and ABCA4 not previously associated with cleft lip, alveolus and/ or palate(CLAP) but now have stronger signals in Asians. However, the GWAS identified fibroblast growth factor receptor2(FGFR2), SUMO1(small ubiquitin-like modifier family) gene, FOXE1(forkhead box E1 gene) as risk factors while Jezewski and colleagues found mutations on MSX1(mshhomeobox 1), FGFR1, FGF8 and BMP4(bone morphogenetic protein-4. Oral clefts show strong familial aggregation, and the recurrence risk amongst first degree

relatives is about 32 times than the general population risk for cleft lip/palate and about 56 times greater for cleft palate [1].

The human face is a focal point for expression and interpersonal communication thus a centre of attraction of all human appearances. Clefting, as it occurs at the oro-facial region, disrupts this arrangement. Individuals with Clefting, experience problems with feeding, speaking, hearing and social integration that can be corrected by varying degrees of surgery which has generated a lot of interest across several specialties in Cleft lip, alveolus and palate (CLAP) care, more so they could be associated with other congenital anomalies.

The tooth contributes significantly to the aesthetic appearance of the face. European visitors to Nigeria admired her Natives "perfect row of white teeth" [6]. The presence of CLAP affects this unique appearance.

Different pattern of demographics of CLAP and management outcome have been described in various regions of the globe, including Africa, the authors therefore undertook this study to evaluate their recent observations.

Methods

All consecutive patients who had cleft lip, alveolus and palate repair at the Federal Medical Centre, Gombe, North Eastern Nigeria, between January 1, 2001 and October 31, 2008 were studied. Particular emphasis on the last 1 ½ years was made, largely following the establishment of an organized Cleft lip and Palate Group, an affiliate of The Smile Train, USA (a Non-Governmental organization that offer assistance to patients with Cleft Lip and/or palate) in the hospital. Data was generated from the following: Age, gender, diagnosis, procedure done, nature of anaesthesia and the outcome of intervention. The operative technique for cleft lip repair was the Millard's and Noordhoof's methods while the cleft palatal repair was the two-flap palatoplasty with intravelar veloplasty. Results were analyzed by simple statistical methods, tables and diagrams. The study observed the Helsinki Declaration.

Results

A total of 149 patients were operated from January 1, 2001 to October 31, 2008. In the first 6 1/3 years (January 1, 2001-April 30, 2007), 27 patients(averaging 4.2 patients per year) were evaluated and operated, Fig1, while 122(81.9%)

for the subsequent 1 1/2 years(May 1, 2007 to October 31, 2008) averaging 81.6 patients per year were operated.

The hospital recorded 6,919 live births within the study period which translates to an incidence of 2.1/1000 live births. There were 77 (51.7%) males and 72 (48.3%) females giving M:F ratio of 1.1:1. Their ages ranged from 3months-60years (Fig. II). Mean age was 12.4years. General anaesthesia was used in 79(53.0%) patients and Local anaesthesia in 70(47.0%) patients. The presentation was majorly cleft lip in 108(72.5%). See Table I. From this, 72(66.7%) were left sided clefts and 36(33.3%) were right

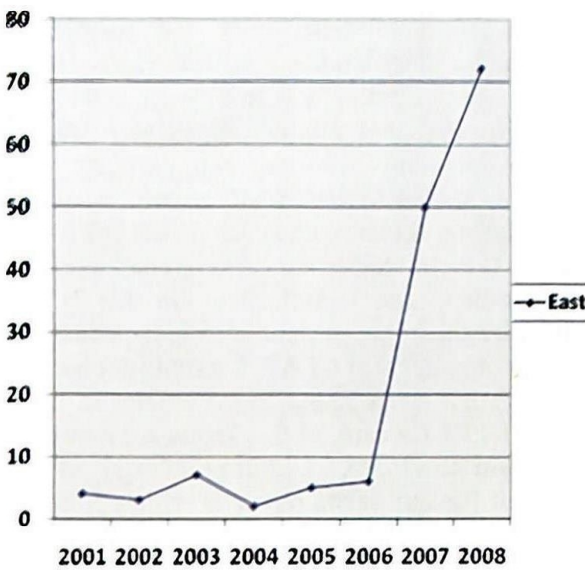


Fig. 1: Yearly Distribution of Cleft Lip and Palate Operation

sided. Bilateral cleft lip were observed in 14(9.4%), combined cleft lip/palate were 16 (10.7%) with 6 males(37.5%) and 10 females(62.5%) and therefore a M:F= 1:1.7. While cleft palate alone were 11(7.4%) out of which 8 were males(72.7%) and 3 females(27.3%) with M:F=3:1. Five (3.4%) patients had associated congenital anomalies from which 3(60.0%) patients had CLAP while 2(40.0%) isolated cleft lip and palate each.

Discussion

Cleft lip, alveolus and/ or palate(CLAP) is the most common congenital anomaly in the head and neck region and the second commonest in the entire body, trailing behind club foot. 7This could be non-syndromic or syndromic with over 300 associated syndromes having been described. 8Approximately, 70% of all cases of cleft lip and/or palate and 50% of cases of cleft palate only are considered to be non-syndromic, respectively.1

The estimated incidence of CLAP ranges from 1:500 to 1:2500 live births with prevalence among the general population varying by race, gender, ethnic, geographical and socio-economic factors.9,10 However, our series recorded an incidence of 2.1/1000 live births which is quite high contrary to previous reports that the anomaly was less prevalent in the African native .11 The authors observed that the formation of the Cleft lip and Palate group at the institution which offer assistance for care of these patients, responsible. The previously described low incidence in Africa might largely be due to financial constraints rather than rarity of the anomaly. This could be confirmed by a 45-year old male farmer who declined operation on his cleft which he claims was his 'source of income'. (He uses it to beg for alms!). Furthermore, the increase in the number of Specialists with interest on CLAP repair in our hospital from one Cleft surgeon in 2000/2001 to nine in 2007 along with public enlightenment might have led to the increased turnover as well.

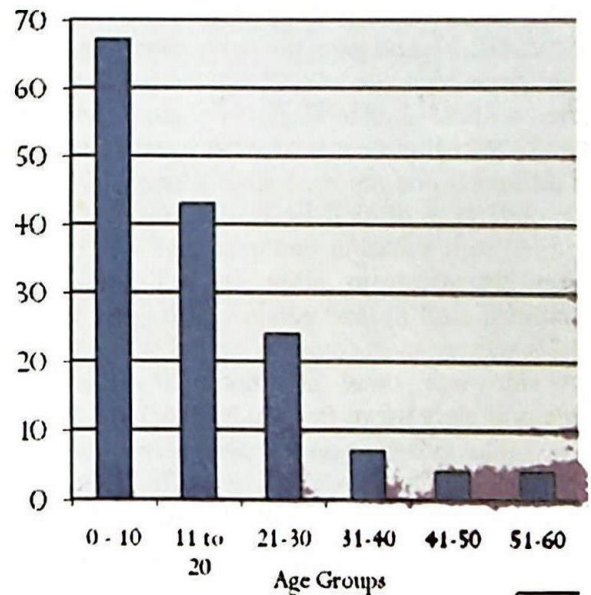


Fig. 2: Distribution of Population by Age Groups

An average of 81.6 patients per year (6.8 monthly) seen in this study is higher than the yearly average of 16.5,12 5013previously reported from Northern Nigeria and 69 cases in Ghana14although cases done under local anaesthesia were excluded from the Ghana report. We also observed a wide patients' age range from 3 months to 60 years, this totally contrasts with the developed countries where early repair is the norm.15 Adult cleft repair is not

Table I: Showing diagnosis by affected side

Cleft Lip	Right	Left	Total (%)
Unilateral complete	22	52	74(49.7)
Unilateral incomplete	14	20	34(22.8)
Total Unilateral	36	72	108(72.5)
Bilateral complete	-	-	08(5.4)
Bilateral incomplete	-	-	06(4.0)
Total Bilateral			14(9.4)
Cleft lip/palate	-	-	16(10.7)
Cleft palate	-	-	11(7.4)
Grand Total			149(100.0)

unusual in our practice due to ignorance and financial constraints.¹⁶ About 26.2% of cases in this study were adults which is remarkably higher than 2.8%¹² previously recorded from the same region. From the available records, this study documented the oldest patient in cleft history.

In 2007, our hospital established a partnership with Smile Train USA which funds medical care for all cleft patients. This could explain both the patient upsurge within the period and the appearance of adults for surgery.

Our M: F ratio of 1.1:1 is in agreement with similar study from Jos, North-central Nigeria.^{12,17} and concurs with overall slight male preponderance in cleft lip and palate from other studies. Unilateral cleft lip accounted for 108(72.5%) of our cases which is similar to 78% of all operations reported from a study.¹⁴ This preponderance of cleft lip is also confirmed by studies from Pakistan that recorded 42%¹⁸ but differ sharply from other researchers where combined cleft lip and palate which constituted 60.2% was the most common type of cleft.¹⁶ The left side was more commonly involved in unilateral cleft lip in this study (n=72, 66.7%).

This observation has also been found in other epidemiologic reviews of clefts but yet to have a clear explanation.¹⁵ Nevertheless, isolated cleft palate found in 11(7.4%) patients occurred more in males (n=8, 72.7%) than females (n=3, 27.3%) contrary to findings in the Caucasians which reported a higher female prevalence¹². The slight male preponderance found in cases of cleft lip and palate by Adekeye in Kaduna-Nigeria is reversed in this study with a ratio of 1:1.7.¹⁹

Other rare clefts such as upper lip median cleft, lower lip median cleft, oblique and lateral clefts which constitute 5% of craniofacial clefts observed by some researchers¹⁷ were not recorded in our series.

Associated congenital anomalies were

seen in 5(3.4%) patients in this study which is at variance with 21% found by Milerad et al²⁰ in Sweden. Most of these associated anomalies observed by other studies that were right-sided, were syndromic clefts.²¹ In this report, however, cases of associated malformations were more frequent in infants who had both cleft lip and palate (n=3, 60.0%) than in infants with isolated cleft palate or infants with isolated cleft lip (n=2, 40.0%). Genetic studies are yet to be conducted to confirm this. The significance for this is to emphasize the importance of holistic approach to the care of patients of CLAP. A multidisciplinary approach has been found to be crucial in any successful CLAP care. In this series, a 3 year old male child developed a cardio-pulmonary arrest post cleft lip and palate repair in which prompt evaluation revealed a bilateral choanal atresia. The ENT surgeons performed a choanoplasty. Usually, bilateral choanal atresia present as emergencies with upper airway obstruction as the paediatric age-group are obligate nasal breathers. In the index case, however, the patient might have been using the cleft for breathing and thus closure, following repair, led to respiratory embarrassment. Other anomalies were referred to their various specialties.

Our Cleft Lip and Palate Group comprises the Maxillofacial, Plastic & Reconstructive, General and ENT surgeons. The Anaesthesiologist ensures safe anaesthesia to observe the dictum "No child should die during Cleft repair" adopted by Smile Train USA. The Paediatrician, supported by dedicated nurses, social welfare workers and community health workers are part of the team that take care of the nutritional rehabilitation of such patients who often are undernourished including home visits in the event of default. This could explain the low failure rate of 4.7% compared with 14.9% reported in a study.¹² They were successfully treated following a revision

operation. Follow-up of patients is an integral part for a successful CLAP care as this spans through a long period, each having a specific intervention measure. Most of our patients who had combined cleft lip/palate often abscond from follow-up visits after repair of the cleft lip as the cosmetic appearance had improved.

Conclusion: The previously documented rarity of cleft lip, alveolus and/ or palate in the African native may no longer be tenable taking into account the computed incidence in this study. Management outcome has improved owing to the collaboration with SmileTrain, USA, along with multidisciplinary approach.

Acknowledgment

We wish to appreciate Smile Train, USA, for bringing succor and smiles to the faces of cleft patients for funding their health care needs. To The Management of Federal Medical Centre, Gombe and the Cleft lip/ Palate group, Gombe, Nigeria, we say thank you for the support and the public enlightenment, grass root mobilization, passion and dedication which made this success possible. Data analysis and writing of this paper was supported by the Medical Education Partnership Initiative in Nigeria (MEPIN) project funded by Fogarty International Center, the Office of AIDS Research, and the National Human Genome Research Institute of the National Institute of Health, the Health Resources and Services Administration (HRSA) and the Office of the U.S. Global AIDS Coordinator under Award Number R24TW008878. The content is solely the responsibility of the authors and does not necessarily represent the official views of the funding organizations.

Declaration

The authors hereby declare that there exist no conflict of interest whatsoever and that no funding was granted purposely for the conduct of this research.

References

1. Michael J. Dixon, Mary L. Marazita, Terry H. Beaty and Jeffrey C. Murray. Cleft lip and palate: Synthesizing genetic and environmental influences, *Nat Rev Genet* March 2011;12(3):167-178
2. Marilyn C. Cornelis, Arpana Agrawal, John W. Cole et al. The Gene, Environment Association(GENEVA) Study Consortium: Maximising the knowledge obtained from GWAS by Collaboration Across studies of multiple conditions. *Genet Epidemiol* May, 2010;34(4):364-372
3. Beaty TH, Murray JC, Munger RB et al. A Genome-wide Association Study(GWAS) of Cleft lip with or without cleft palate identifies risk variants near MAFB and ABCA4. *Nat Genet* 2010;42(6):525-529
4. Jeweski P, Vieira A, Nishimua C et al. A sequencing study of Candidate Gene Study identified association of clefting in mutations in MSX1, FGFR1, FGF8 and BMP4. *Journal of Medical Genetics* 2003;40(6):399-407
5. Lustig LR & Niparko JK. Disorders of the Facial nerve In: Lalwani AK ed. *Current Diagnosis & Treatment in Otolaryngology, Head & Neck Surgery*. McGraw-Hill Medical Publishers 2nd edition 2008 pp847-872.
6. Nwaorgu OGB, Onakoya PA, Sogebi AO, Kokong DD, Dosunmu OO. Impacted Oesophageal denture. *J Natl Med Association* 2004;96(10):1350-1353
7. Gorlin RJ, Cohen MM, Levin LS. *Syndromes of the Head and Neck* 3rd edition, NY. Oxford University Press 1990 pp693-783
8. Habel A, Sell D. Management of Cleft Lip and Palate. *Archives of diseases in Childhood* 1996;74:360-364
9. Sala-Marti S, Merino-Tessore MD, Escuin-Henar T. Prosthetic Assessments in Cleft Lip and Palate : A Case Report..*Med Oral Patol Oral Cir Buccal* 2006;11:E493-496
10. Moore EJ, Senders CW: Cleft Lip and Palate In: Lee KJ ed. *Essential Otolaryngology, Head&Neck Surgery* 8th edit .McGraw-Hill Medical Publishing Division,2000 pp248-257
11. Das SK, RonnelsRS ,Smith JC, Cohly HHP. Epidemiology of cleft lip and palate in Mississippi. *South Med J* 1995; 88(4): 437-442
12. Orkar KS, Ugwu BT, Momoh JT. Cleft lip and palate; the Jos experience. *East Afr Med J* 2002;79(10): 510-513
13. Adeola DS, Ononiwu CN, Eguma SA. Cleft lip and palate in Northern Nigerian Children. *Annals of African Medicine* 2003; 2(1): 6-8
14. Donkor P, Bankas DO, Agbenorku P, Plange-Rhule G, Anasah SK . Cleft lip and palate surgery in Kumasi, Ghana. *J CraniofacSurg* 2007; 18(6): 1376-1379.
15. Lee TJ, Kim ST. A survey of cleft lip and palate management taught in training programmes in Korea. *The Cleft Palate-Craniofacial Journal* 2003; 40(1): 80-83.
16. Obuekwe O, Akapata O. Pattern of cleft lip and palate(corrected) in Benin City, Nigeria. *Cent Afr J Med* 2004; 50(7-8): 65-69.
17. Datubo-Brown DD. Plastic Surgery. In: EA Badoe, EQ Archampong, JT da Rocha-

- Afodu(eds). Principles and practice of surgery including pathology in the tropics, third edition. Publishing Division of Ghana Publishing Corporation 2000 pp244-251
18. Elahi MM, Jackson IT, Elahi O, Khan AH, Mubarak F, Tariq GB, Mitra A . Epidemiology of cleft lip and palate in Pakistan. *Plast Reconstr Surg* 2004;113:1548-1555
 19. Adekeye EO, Lavery KM. Cleft lip and palate in Nigerian children and adults: a comparative study. *Br J Oral Maxillofac Surg* 1985;23(6):398-403
 20. Milerad J, Larson O, Hagberg C, Ideberg M. Associated Malformations in infants with cleft lip and Palate: A prospective population-based study. *Paediatrics* 1997; 100:180-186
 21. Hoffmann WY . Cleft Lip and Palate. In: Lalwani AK ed. *Current Diagnosis and Treatment in Otolaryngology, Head and Neck Surgery* 2nd edit. McGraw-Hill Medical 2008 pp323-339